



Responding to Identified Concerns of Child Exploitation

Local Protocol

Version	5 final
Date	19 th April 2016
Review	
Produced by	Susan Mitchell Tracy Herschel
Signed off by	CPC

1 Introduction

This protocol for frontline practitioners outlines the Inverclyde way of working when there are concerns around the exploitation of children and young people. It provides a referral pathway that links with wellbeing need and child protection and gives additional information around support services.

For more information please refer to the Child Sexual Exploitation Practitioner's Resource Pack produced by Barnardo's on behalf of the West of Scotland Child Protection Committee Chairs Consortium.

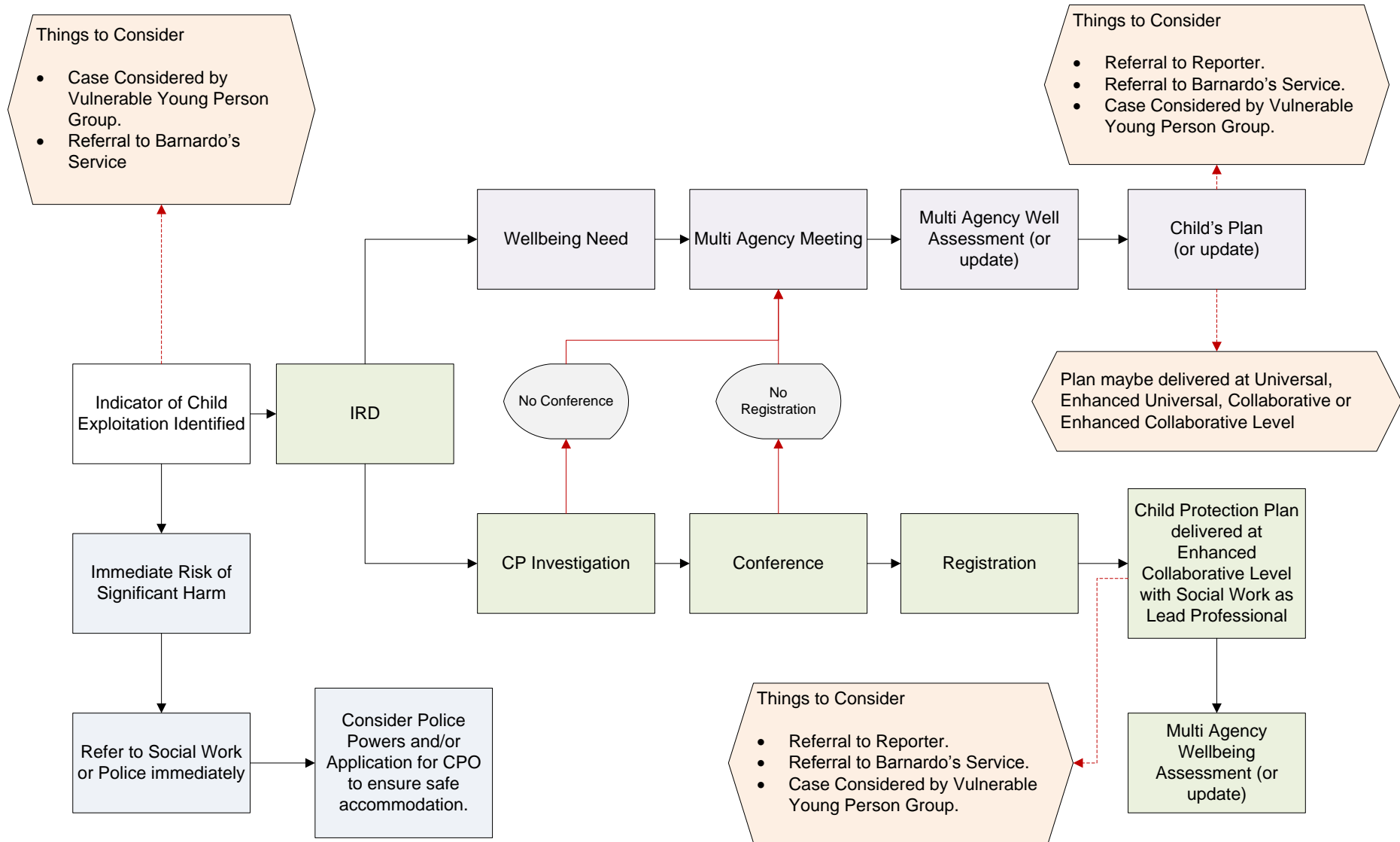
The Practitioner's Resource Pack can be downloaded from the Inverclyde Child Protection Committee website:-

<http://www.inverclydechildprotection.org/GetAsset.aspx?id=fAAyADQANAAwADkAfAB8AEYAYQBsAHMAZQB8AHwANgB8AA2>

This protocol can be downloaded from

<http://www.inverclydechildprotection.org/professionals/policies-procedures/>

2. Child Exploitation Pathway



3 Assessment of young people where there are concerns of exploitation

Wherever there is a concern around exploitation this should be discussed through an Initial Referral Discussion and must result in a multiagency assessment of risk of significant harm, future harm and wellbeing need. The lead professional during this assessment process will be from social work services. The management oversight of this process requires that any assessment is signed off by an operational service manager within Social Work Services with a young person's plan developed that allocates roles and responsibilities to support the young person and manage the identified risk.

The use of the tools within the National Risk Framework should be considered to inform this assessment as should the guidance contained in chapter 4 of the Child Sexual Exploitation Practitioner's Resource Pack produced by Barnardo's on behalf of the West of Scotland Child Protection Committee Chairs Consortium.

These documents can be downloaded by following the links below:-

National Risk Framework:-

<http://www.gov.scot/Publications/2012/11/7143>

Child Sexual Exploitation Resource Pack:-

<http://www.inverclydechildprotection.org/GetAsset.aspx?id=fAAyADQANAAwADkAfAB8AEYAYQB8AHMAZQB8AHwANgB8AA2>

Barnardo's Safer Choices Project use the specialist SERAF assessment tool to help assess risk of sexual exploitation for young people who are referred to this service. For more information on this assessment model please contact the Barnardo's Safer Choices on 0141 243 2393.

4 Vulnerable Young Persons Operational Group

The group exists to safeguard young people who are at risk of exploitation.

4.1 Membership

It consists of senior managers from social work, education, health, SCRA and Barnardo's and is chaired by Police Scotland. The current membership of the group is

- DCI Fillipo Capaldi (chair) (Police Scotland)
- Anne Glendinning (Inverclyde HSCP - Social Work Services)
- Elsa Hamilton (Inverclyde Council - Education Services)
- Karen Gleed (NHS GGC)
- Terry Gallagher (Barnardo's)
- Kenneth Ritchie (SCRA)

4.2 The Role of the Group

The role of the group is to work collaboratively where risks of exploitation have been identified and access early and relevant help and support. The group facilitates the sharing of information and assessment of risk associated with victims, perpetrators and locations using a proactive problem solving approach. At each meeting an appropriate manager with knowledge and responsibility of the child or young person will be invited to the meeting. Where a multiagency team around the child has been established and a Lead Professional has been appointed this Lead Professional should also attend the meeting. The Lead Professional is responsible for sharing information from this meeting with the members of the multiagency team around the child including the Named Person.

The group meets on a bimonthly or as required.

4.3 Referral to the Vulnerable Young Persons Operational Group

All agencies can make a referral to the Vulnerable Young Persons Operational Group. Practitioners should discuss any concerns with their team leader or manager. Team leaders/managers who identify a young person to be at risk of exploitation should contact their agency representative on the group to discuss if a referral to the Vulnerable Young Persons Operational Group is appropriate.

If a referral is agreed the team leader/manager must ensure that a report or Risk Assessment is provided to their agency representative who will then circulate this to the group in advance of the meeting. Where the child or young person is known to Social Work Services they will ensure that the Child's Plan is provided to the group for discussion.

4.4 Governance

The Group has been established on a partnership basis and will be focused on the needs of the child or young person. It will not however duplicate or replace the functions of statutory child protection or child in need processes in relation to individual children.

Oversight of the group is provided through the Vulnerable Young Person's Strategic Group which is a sub group of the Child Protection Committee.

5 Framework of Support Services

Services	Universal	Enhanced Universal	Collaboration	Enhanced Collaboration
Service Provision at this level based on identified wellbeing needs	Child's needs are met by universal services	Child's needs require enhanced support	Child's needs are multiple and requires multi-agency support	Child's needs are immediate
Who the service helps?	Child and their engaging families, and their partner agencies	Children with vulnerability	Children with vulnerability and complex needs	Children at risk of continuing significant harm
What frameworks could support?	Multi-agency Wellbeing Assessment; Network of Support with the Named Person as co-ordinator of the Child's Plan	Multi-agency Wellbeing Assessment; Network of Support with a Lead Professional (not social work); Advocacy	Multi-agency Wellbeing Assessment with social work the Lead Professional; Graded Care Profile; Advocacy	Child Protection Assessment; Legal framework; Specialist health assessments; Advocacy
Examples of services which may be or have been involved?	Education - Pastoral Care and educational Psychology; School Nurse; GP; Sexual Health Service-Sandyford Clinic; Social Work	Education - Pastoral Care and Educational Psychology; GP; Social Work; CLD-Youth Team; Sexual Health Service-Sandyford Clinic; Inverclyde Youth Drugs Service; Young Person Alcohol Team; Barnardos Nurture Service; Mind Mosaic;	Social Work; Police; Education; CAMHS; Youth Support Team – including Alcohol and Drugs; Barnardo's Safer Choices Project; Children's 1st; SNIPs; Barnardo's Nurture Service	Social Work; Police; Education; Reporter; CAMHS; CPU; Archway; West of Scotland Adolescent Inpatient Unit – Skye House, Stobhill; National Child Inpatient Unit; Barnardos Safer Choices Project; Court; Notra Dame Child Clinic

Key Contacts; Social Work Duty Team

Tel No: 01475-715365

Police - Public Protection Unit

Tel No: 0141-357-6159

Glasgow & Partners Emergency Social Work Service

Tel No: 0141 305 6930

Immediate Child Protection Concerns: Speak to your line manager and telephone the Police – dial 101

6 Local Services for Vulnerable Adolescents at risk of Exploitation

The following mapping has been produced for Inverclyde Child Protection Committee, Child Sexual Exploitation Strategy Group. It is drawn from an exercise undertaken by NHS Greater Glasgow and Clyde.

TITLE OF SERVICE	DESCRIPTION OF SERVICE	Referral and contact details
Health Services		
Community Child and Adolescent Mental Health Service (CAMHS) Inverclyde	<p>Community CAMHS provides a service for children and young people age 0-18 years with a range of mental health needs who are experiencing moderate to severe mental health difficulties. The service is delivered through a Multi-disciplinary Team that consists of Psychiatry, Psychology, RMN, Family and Systemic Psychotherapy, Psychotherapy, OT and SLT. The service provides</p> <ul style="list-style-type: none"> - Assessment and treatment of psychiatric disorders in childhood and adolescence. - Consultation and liaison with health professionals and with other agencies working with young people and their families. - Provision of a medico-legal and forensic service such as providing reports to the children's panel and to the courts 	GP or medical consultant referral.
Sexual Health Services (Sandyford)	Sexual Health Services are provided at the Sandyford satellite clinic at Boglestone Health Centre. This provides walk in clinics three times per week plus young people only session walk in clinics twice per week and an appointment clinic once per week.	Self referral - Walk in sessions and appointment clinic. School nurses support and advise young people to refer themselves.
Health Services		
School Health	The school nursing service provides a population based service for school aged children. Their work includes dealing with vulnerability, health promotional activities and immunisation. School nurses are the first professional point of contact where schools have health concerns about children. The school nursing service provides targeted direct clinical care, health assessment and referral to appropriate health services and it has the needs and views of children and young people at the centre of service provision.	<p>Any agency can contact school nurse service and discuss a young person / request a service and young people may have direct access within secondary schools.</p> <p>Telephone Greenock Health Centre on 01475 724477 or contact the school nurse via the child's school.</p>

TITLE OF SERVICE	DESCRIPTION OF SERVICE	Referral and contact details
Health Services		
GPs	Every family has a named GP. Children and young people can access their GP in private at their surgery or home.	Direct access GP surgery contact details available on the website https://www.inverclyde.gov.uk/health-and-social-care/health-services-health-improvement-wellbeing/gp-practices
Specialist Children's Services	Specialist Children's Services provides for children and young people age 0-18 years who have a range of health needs that require specialist assessment, intervention and management. Children/Young People should only be referred when they require specialist intervention and when universal services can no longer meet their needs This includes children who have a level of vulnerability which impacts on their health and wellbeing. The Multi-disciplinary team consists of Community Paediatricians, Community Children's Nursing, Community Paediatric Physiotherapy, Community Paediatric Occupational Therapy and Community Paediatric Speech and Language Therapy.	Referrals accepted from Health, Social Work and Education. The service welcomes discussions in relation to any child/young person but require a referral form to be completed. Referral forms should be sent to Skylark Child Development Centre, Level L-North, Inverclyde Royal Hospital. Contact 01475-505140
Emergency services	Emergency services are provided from Inverclyde Royal Hospital. Together with Out of Hour's services and NHS 24, these Emergency departments offer an immediate response where there are child protection concerns.	Direct Access Service 24 hours a day

TITLE OF SERVICE	DESCRIPTION OF SERVICE	Referral and contact details
Alcohol and Drug Services		
Inverclyde Youth Drugs Service	This service provides 1:1 information and support for young people who are misusing substances. The service is provided by youth support workers. An assessment is undertaken and an action plan is put in place. This service may provide short or long-term support.	<p>Self referrals and referrals from family members are accepted as are referrals from any agency or service.</p> <p>Referrals can be taken over the phone or by completing a referral form.</p> <p>Contact 01475 715367, ask for youth support team, drugs workers.</p>
Young Person Alcohol Team	This service is dedicated to tackling Alcohol problems amongst young people up to the age of 26 years. It provides an extensive prevention and education programmes in both primary and secondary schools, counselling services and engages with organisations that provide a service to young people.	<p>Referrals are accepted from any agency or service or from parents.</p> <p>Referrals are routinely received from the Early and Effective Intervention group and from Emergency Departments as part of the board wide intoxicated adolescents policy.</p> <p>Anyone wishing to make a referral should contact the service 01475 715353.</p>

TITLE OF SERVICE	DESCRIPTION OF SERVICE	Referral and contact details
Education Services		
Pastoral Care	All pupils have a designated Guidance Teacher who they have access to should they need to discuss any issues which are worrying them, including worries over things that are happening out of school. Parents can also request to meet with their child's Guidance teacher if they have concerns over the wellbeing of their child.	Direct access service for young people within school and for parents by appointment directly with the school. School contact details can be found at http://www.inverclyde.gov.uk/education-and-learning/schools
Educational Psychology	The service aims to apply psychological knowledge, skill and expertise to promote child development, effective learning and wellbeing. Educational Psychology offer a variety of interventions ranging from consultation and advice, assessment in collaboration with key adults, and working directly with children and young people.	Referrals come primarily from school or early years staff. Parents and professional colleagues can also make direct contact with Educational Psychology Service and older children can make a confidential self-referral. Phone 01475 715430
Community Learning and Development (CLD) – Youth Team	Aims to help individuals and groups in their communities to achieve their life goals and tackle real everyday issues in their lives through community based learning and community action. A key element of the service is I-Youth Zone. This service provides a safe place for young people to participate in a range of activities, gain access to advice and support and encourages them to become actively involved in their communities. Young people aged 12+ can meet friends, access computers/internet, make arts and crafts, participate in team activities, play games and have access to trained youth work staff. The project also provides a range of information on various issues such as alcohol and drugs, sexual health, mental health and bullying.	Direct access service for young people. For more information contact the Youth Work Team on 01475 715450 or at CLD.Admin@inverclyde.gov.uk

TITLE OF SERVICE	DESCRIPTION OF SERVICE	Referral and contact details
Social Work Services		
Children and Families Social Work	Inverclyde Health and Social Care Partnership has five children and families operational teams providing a core social work service including a child protection service to children, young people and their families across Inverclyde. There is also a dedicated team who provide a service for Children with Additional Support Needs, and youth justice, youth support and throughcare teams and a family placement team. A young carers service and kinship care service are also provided.	Access for new children or families is via the duty social work service for children and families. Contact 01475 715365.
Third Sector		
Children 1st	<p>The service in Inverclyde works with children and young people between five and 18 years who have been affected by either domestic abuse or sexual abuse to help them recover from their experiences.</p> <p>Our staff offer young people a safe environment in which to build a trusting relationship with their worker, through a range of therapeutic supports including counselling skills, art, play and other forms of creative communication, such as role play, puppets and storytelling to help them understand and cope with their feelings. We help children and young people to take charge of their healing and recovery and get their safe and healthy development back on track, and encourage them to develop trusting relationships with safe boundaries in the future.</p>	<p>Referrals received from Social work services, education, health or voluntary services, parent's / carers or self-referrals.</p> <p>Telephone enquiry followed by completion of referral form.</p> <p>Phone 01475 720747</p>

TITLE OF SERVICE	DESCRIPTION OF SERVICE	Referral and contact details
Barnardo's Safer Choices Project	Safer Choices aims to support children and young people aged 18 years and under to identify risk and devise strategies to minimise harm, particularly in relation to sexual exploitation. As well as direct contact and intervention via street work and prevention work in schools (residential and mainstream), we will participate in Inverclyde's VYP Operational Group in relation children and young people, identifying and supporting those young people most at risk.	<p>Referrals received from partner agencies – Police Scotland SWS Education, Health and others.</p> <p>Referrals will primarily come via the VYP Operational group.</p> <p>Telephone enquiry followed by completion of referral form.</p> <p>Phone 0141 243 2393</p>
Barnardo's Nurture Service – Improving Futures	<p>Threshold Plus Service: aims to reduce the chaotic impact of alcohol and/or drug misuse on 16-25 year olds in Inverclyde and their children, if they have any.</p> <p>They aim to work with young people to identify the areas of support that are required as an important young adult, to achieve personal and physical safety.</p> <p>The Service offers to:</p> <ul style="list-style-type: none"> - Develop individual support plans - Provide support to attend appropriate health and support services - Deliver and provide access to individual parenting support and groups - Provide practical support to liaise with accommodation providers - Provide support to improve family and community relationships - Provide support to access appropriate benefits and allowances - Provide information and practical support to access education, training and employment 	<p>Referrals received from Social work services, education, health or voluntary services, parent's / carers or self-referrals.</p> <p>Telephone enquiry</p> <p>01475 728493</p>

TITLE OF SERVICE	DESCRIPTION OF SERVICE	Referral and contact details
3rd Sector		
Notre Dame Child Guidance Therapeutic service	Notre Dame Child Guidance provides intensive support to children who have emotional difficulties.	Referrals can be made by education services, social work services or NHS however referrers must have secured funding before making a referral.
Mind Mosaic	Children and young people can be referred for Play Therapy for a range of issues, such as - Grief and loss; sexual abuse; trauma; life transitions; fostering and adoption; challenging behaviour; disabilities; Autistic spectrum disorder. When referrals are received for Play Therapy, the young person will initially receive 3 sessions. During this time, the Play Therapist will assess need, and identify appropriate intervention. Further to assessment, the young person attends weekly sessions at the same time, place and same day.	Self referrals or referrals from health or support workers from any agency. Contact 01475 892208. However due to lengthy waiting lists for young people at Mind Mosaic, unless referrals linked to CSE were funded, they would not be prioritised.

NHSGGC Board Wide Services

TITLE OF SERVICE	DESCRIPTION OF SERVICE	Referral and contact details
SEXUAL HEALTH SERVICES		
Youngpeople@Sandyford	Sandyford provides sexual health services and advice for young people. They have young people only clinic times. NHSGGC is currently reorganising some of its sexual health provision, which will change the existing landscape.	Direct Access Service http://www.sandyford.org/
Archway	Archway sexual assault service for adolescents provides forensic medical and follow up for adolescents who have been acutely sexually assaulted. – The service has the views and feelings of young people at the centre.	Self referral or referral from police Tel 0141 211 8175 archway@ggc.scot.nhs.uk
RECOVERY SERVICES		
National Child Inpatient Unit	The service offers treatment of severe and complex mental health problems from a multi-disciplinary team. Informal assessment and intervention takes place continually throughout the child’s stay in the unit. This service is the sole child in-patient service provider for Scotland. The ward is currently a 9 place unit for 5-12 years old with some flexibility at either end according to clinical need. Places may be for in-patients or day patients.	Clinical referral required. Psychiatric referral
West of Scotland Adolescent Inpatient Unit – Skye House, Stobhill	This is funded by the West of Scotland Health Boards for 12-17 year olds who suffer from a severe psychiatry disorder. 24 in-patient bed places are available for young people from West of Scotland Health Boards	Clinical referral required Psychiatric referral only
Tier 4 CAMHS – Complex Social Vulnerability	A multi-agency pathway of care for children who have severe mental health and behavioural problems and who live in circumstances of complex social vulnerability including those children Looked After by the Local Authority.	From Community CAMHS
Liaison Midwife for Teenage Pregnancy	Liaison Midwife for Teenage Pregnancy offers support and advice to pregnant girls under the age of sixteen.	Referral via Special Needs in Pregnancy Service

